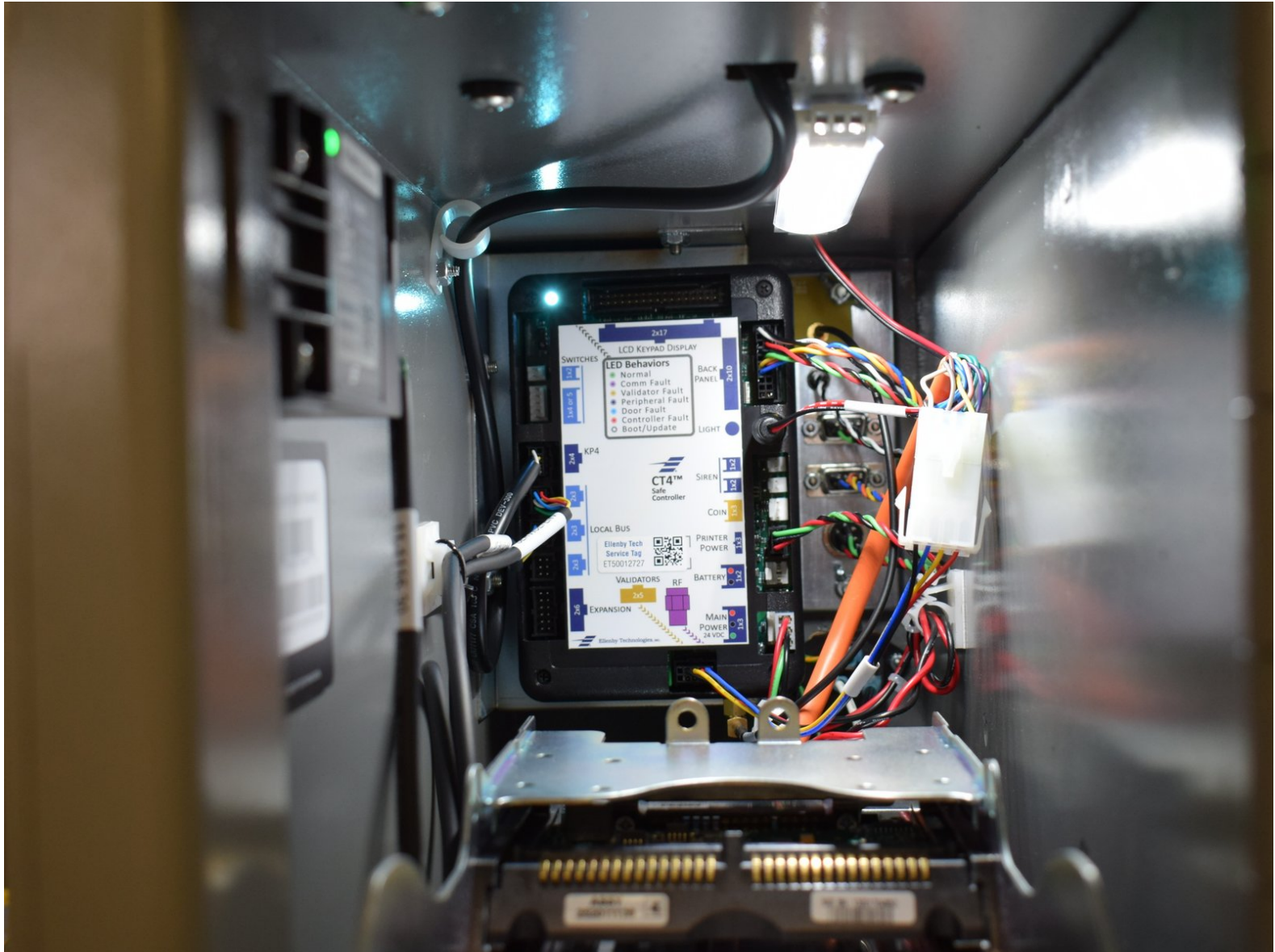




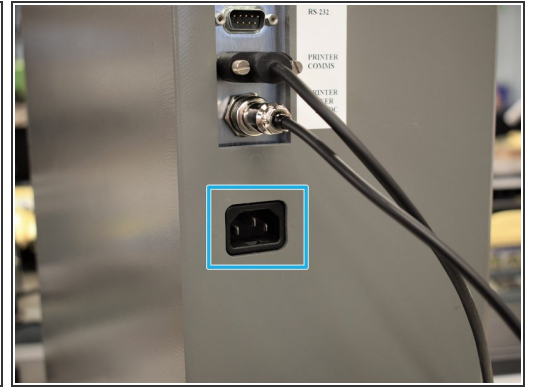
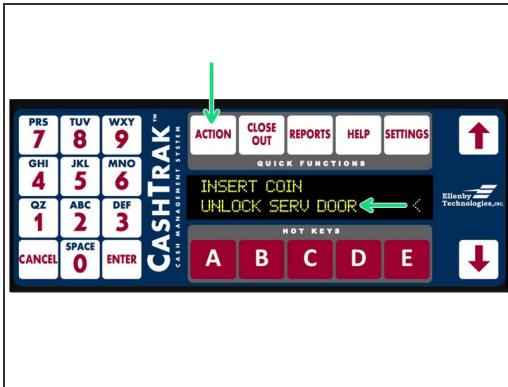
Swapping Safe Controller

Written By: Dozuki System



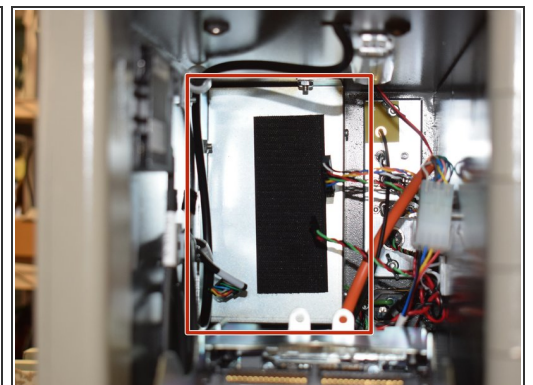
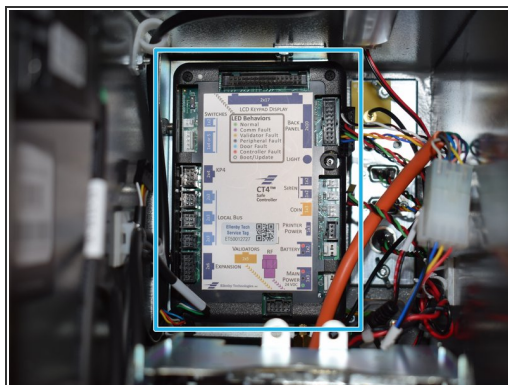
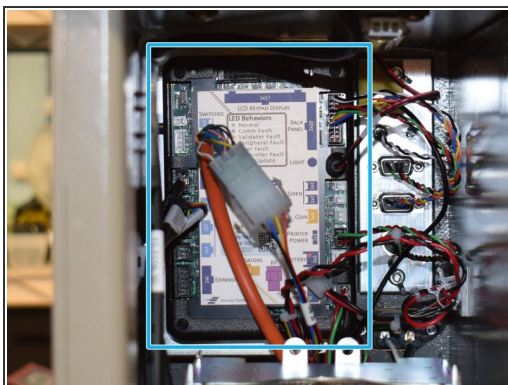
INTRODUCTION

Step 1 — Opening the Service Door



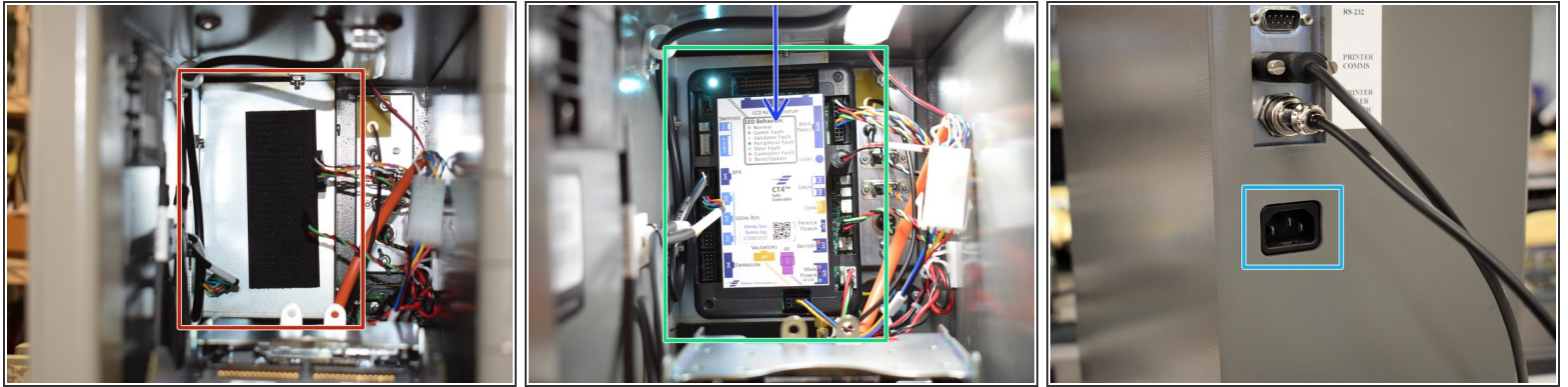
- Open the service door by navigating to Action -->Unlock Serv Door
- Remove the Bill Acceptor head(s) by pressing the metal security bar upwards and pulling the unit(s) out.
- Disconnect AC power from safe, fully powering it down.
 - ⓘ If not possible, disconnect 24V DC power harness from safe controller

Step 2 — Disconnecting the Cables



- With power successfully removed from the safe, reach into the rear of the safe and remove all currently installed cables from the Safe Controller.
- With all cables disconnected, detach the controller from it's velcro strip.

Step 3 — Installing the New Controller



- Take the replacement controller mount the new controller onto the velcro strip you removed the old controller from.
- Take all of the cables you removed from the controller earlier and reinstall them into their designated port.
 - You can use the graphic on the cover of the controller to assist in reinstalling all cables.
 - After confirming all connections are correct, plug in the AC power cable back into the safe.
- ☑ After confirming the safe powers up correctly, reinstall the Bill Acceptor head(s) and close the door.
 - ⚠ Ensure the metal security bars of the Bill Acceptor(s) are fully secure into the chassis.