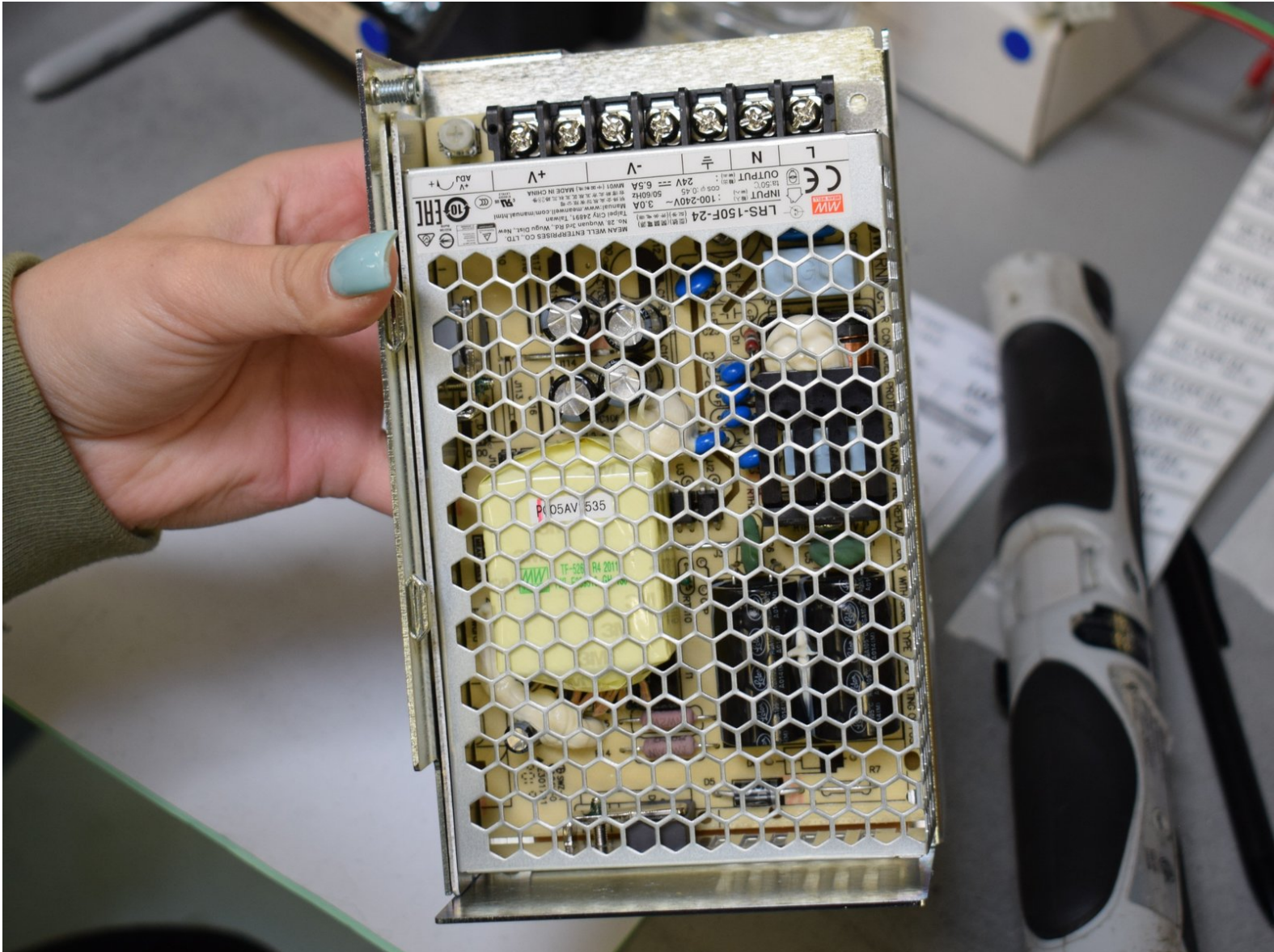




Swapping the Power Supply

Written By: Dozuki System



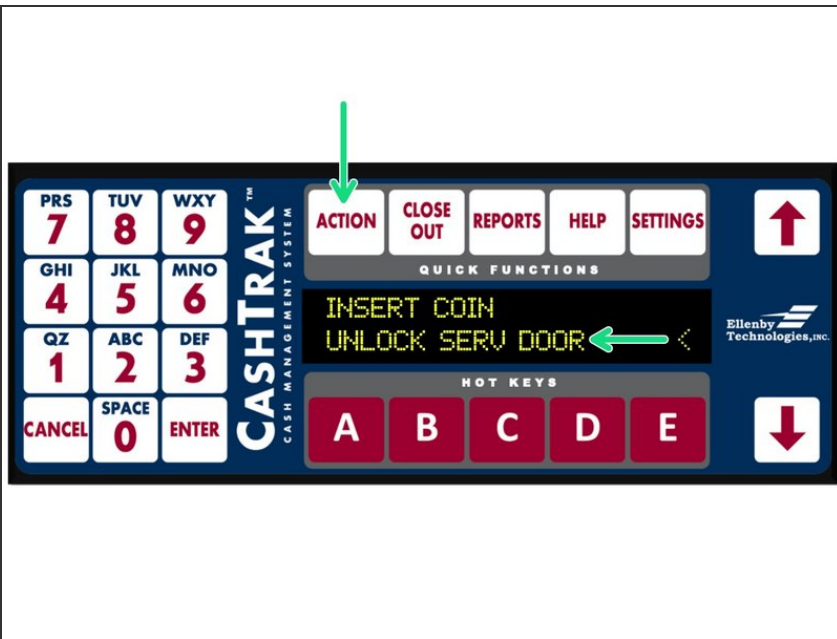
INTRODUCTION



TOOLS:

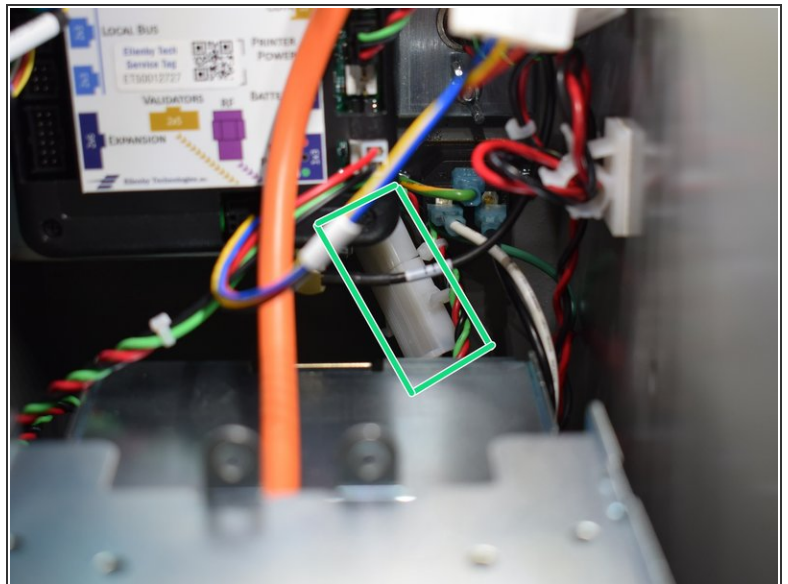
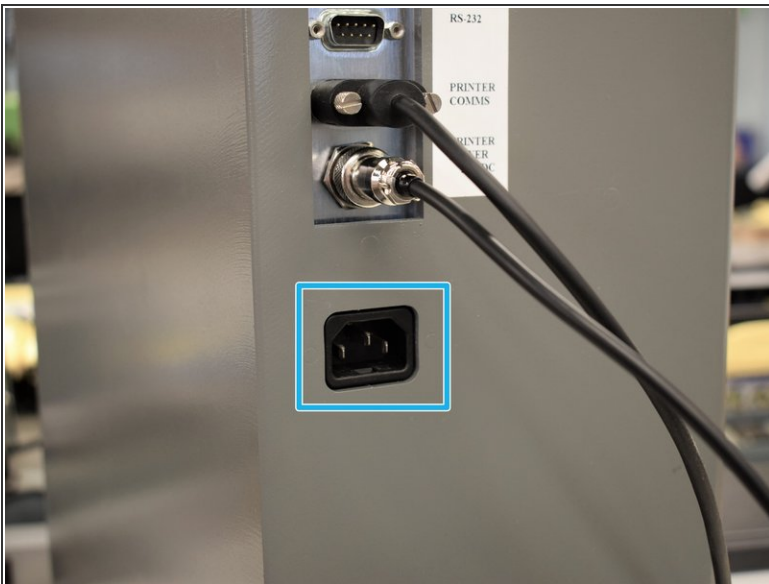
- [3/8" Drive Ratchet](#) (1)
-

Step 1 — Open Service Door



- Open the service door by navigating to Action -->Unlock Serv Door
- ① May require the use of a backdoor unlock method in the event of a complete power supply failure without operating battery backup.

Step 2 — Remove AC Power to Safe



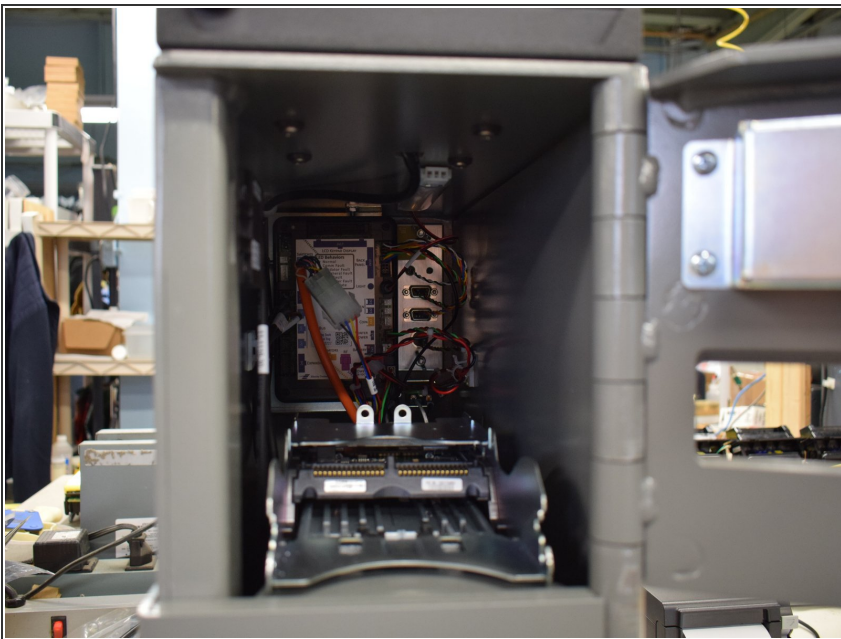
- Disconnect AC power from safe
 - Disconnect AC line cable from the back of the safe.
 - Reach into the back of the safe and disconnect inline AC power plug inside the safe.

Step 3 — Disconnect Power to Controller



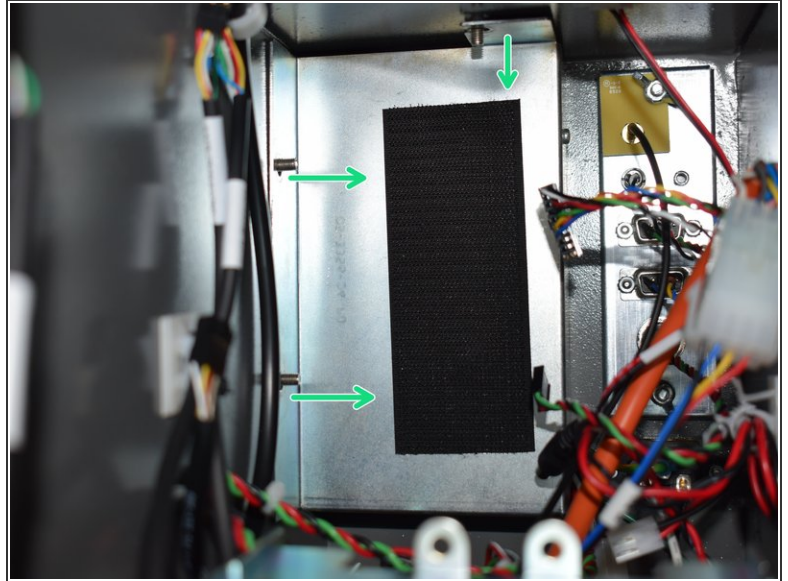
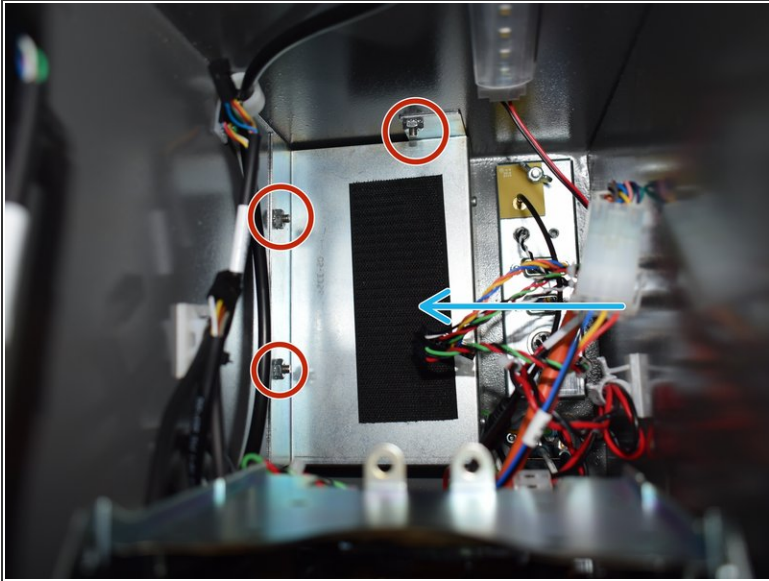
- Disconnect 24V DC power harness from safe controller
- ❗ Disconnect internal battery backup harness from safe controller (if applicable)

Step 4 — Verify Safe Power Removed



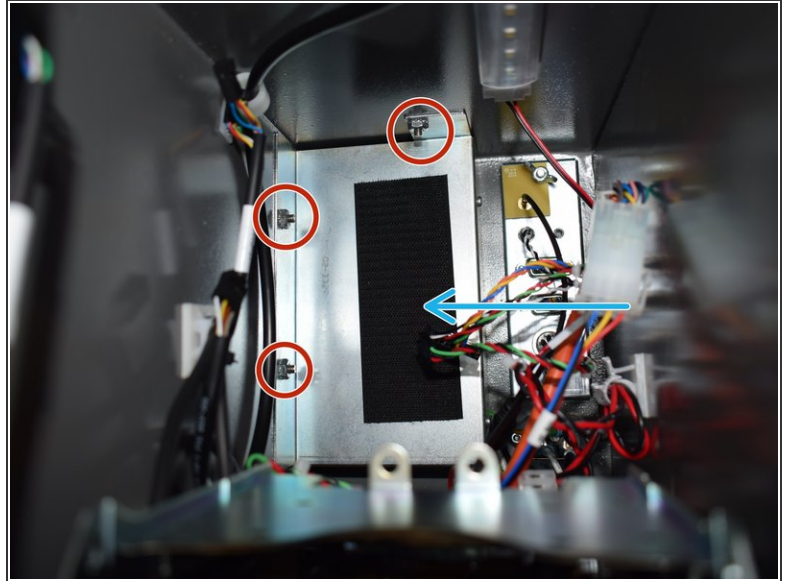
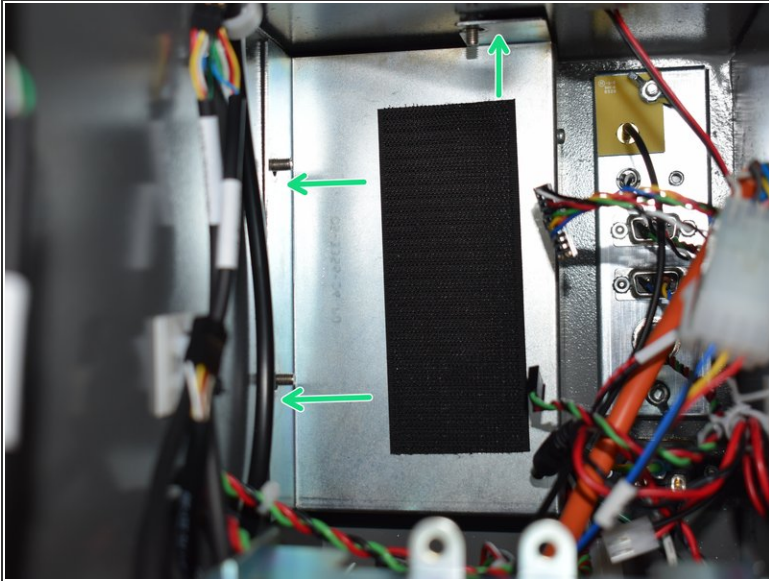
- Ensure no LEDs lit inside the safe
- Ensure Service Light is dark
- Ensure keypad display and validators are all powered down.
- ❗ Recommend verifying power removed with multimeter

Step 5 — Uninstall Power Supply Bracket



- Remove all cables from the safe controller and then remove the safe controller from its velcro strip.
- Take a 3/8 socket wrench and remove the 3 hex nuts that secure the power supply.
- Remove the power supply by sliding it off of the 3 studs from the safe wall and pull it out of the safe.
- ❗ If you are encountering difficulty you can remove the chassis for greater maneuverability (though this requires access to the Cash Door)

Step 6 — Install replacement power supply



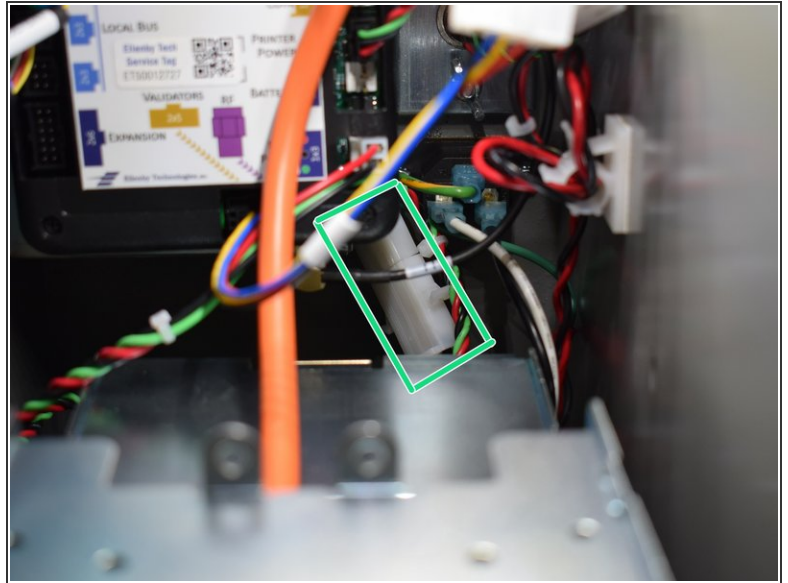
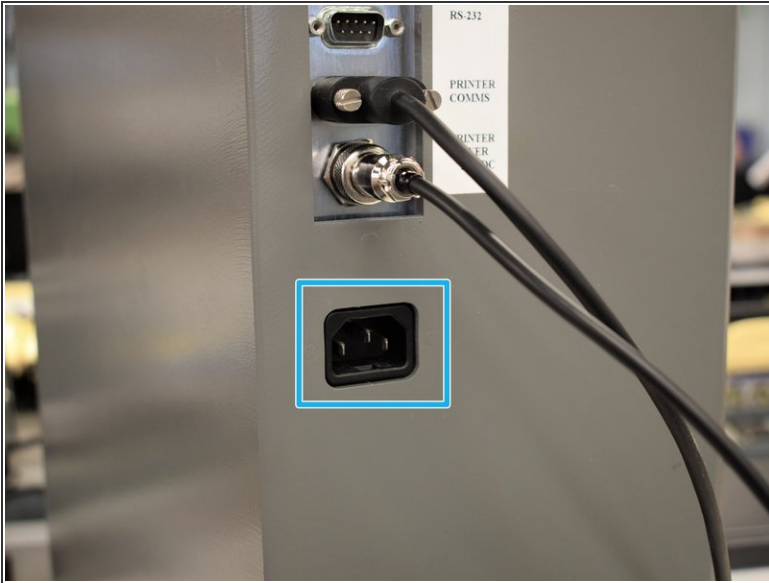
- Install the new power supply by mounting it onto the 3 studs in the back of the safe.
- Secure it via the 3 hex nuts you removed from the old power supply.

Step 7 — Reinstall Power Connectors to Controller



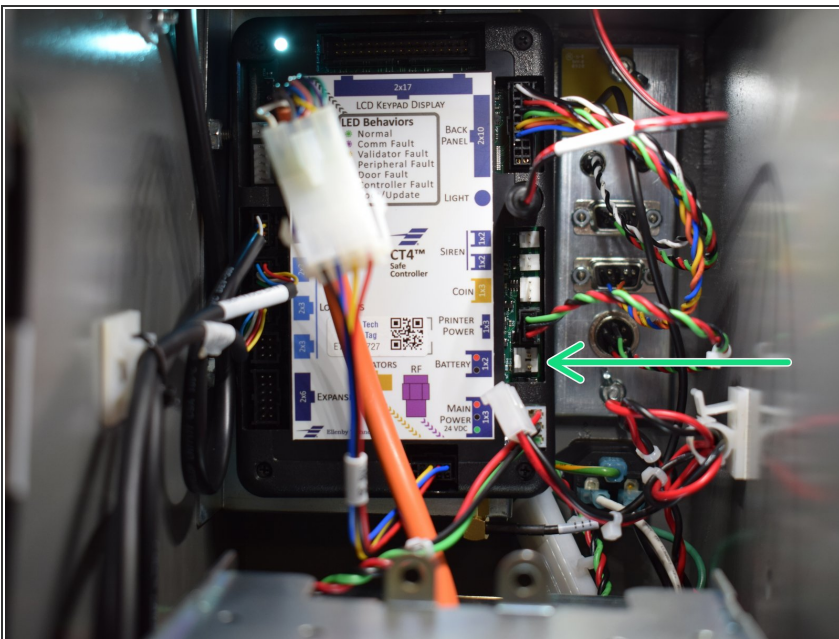
- Reinstall all cables you removed from the safe controller earlier.
- ❗ Install battery harness to safe controller (if applicable)
- ☑ Use the guide on the front cover of the controller if you need assistance finding where the cables are supposed to be installed.

Step 8 — Restore AC power to safe



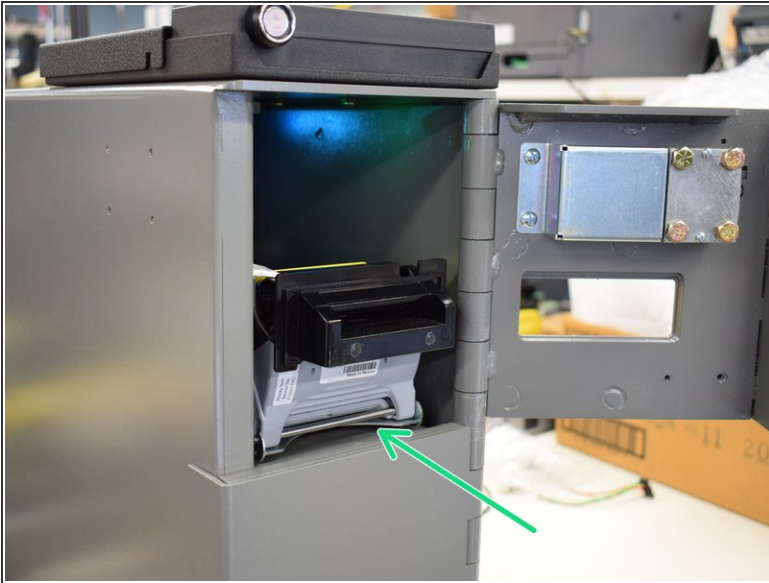
- Plug AC line cord into the IEC power jack at the back of the safe.
- Re-install the inline AC power connector if disconnected.

Step 9 — Verify Replacement Supply Operation



- Ensure safe is running properly from 24V by momentarily disconnecting battery harness from safe controller and ensuring power remains to safe.
- ① Similarly you can check by navigating to Settings -->input valid Manager ID -->press the "A" hotkey

Step 10 — Close Service Door



- After confirming safe is fully powered, reinstall Bill Acceptor head(s) into chassis.
 - ⚠ Ensure metal security bar of the Bill Acceptor is fully seated in chassis.
- Close the Service Door.