



# Locking System

CASHTRAK™ Security

## Six Dimensional Bolt Trap [6DBT]

A locking system designed from the ground up, specially suited to meet the rigorous needs of retail cash management. Patent pending, industry leading security exclusively for Ellenby smart safes.



- Tracking of all door opening events
- Real-time intrusion monitoring for lock and door
- Fully encrypted serial communications
- All electronics mounted to side wall of the safe [no wiring across door hinge]

412 Grandview Ave.  
Woodbury Heights, NJ 08097  
(856) 848-2020  
ellenbytech.com

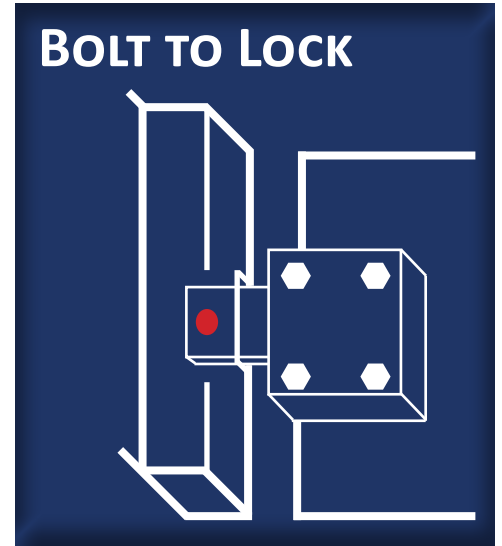
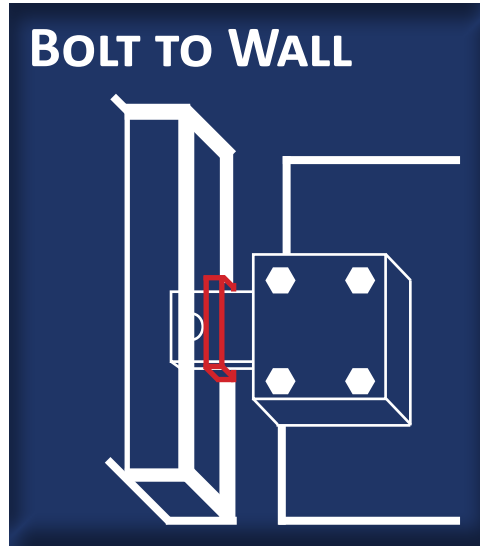
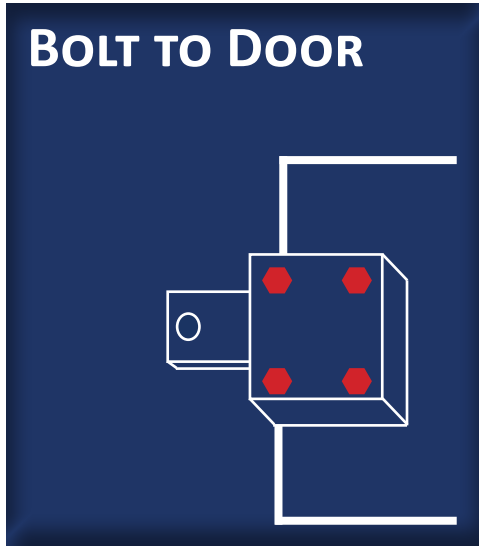


Ellenby Technologies, INC.

# 6DBT LOCKING SYSTEM

## THREE DIMENSIONS OF PRY-RESISTANCE

Traditional safe locking mechanisms prevent bolts from retracting by blocking them on the door-side. Our unique bolt trap system grabs the bolt on the side wall of the safe with a steel dowel which effectively pins the bolt both on the door side and the wall side. Attempts to pry open a locked door must overcome tremendous pressure of a bolt secured on both side.



## THREE DIMENSIONS OF ELECTRONIC MONITORING

Traditional electronic door lock controllers monitor if a door is opened or closed by monitoring a door sensor such as a switch, magnetic, or optical sensor. Our bolt trap system detects the presence of the locking bolt itself to indicate that not only the door is closed, but the bolt is extended. The system then also reports the true position of the locking arm that engages with the bolt to know the lock is engaged with absolute certainty. Finally, the system monitors for tampering near the lock mechanism that may indicate attempts to defeat the lock or drill around it.

